

RECOMMENDED OPTIONS:

- ✓ **Available lifting height options** (the fifth wheel always features 2 available heights):

① - 166 mm plus 104 mm = 270 mm

② - 166 mm plus 154 mm = 320 mm

③ - 166 mm plus 206 mm = 372 mm

- ✓ **COLOUR ACCORDING TO THE RAL PALETTE**

- ✓ **GROENEVELD AUXILIARY SYSTEM FOR CENTRAL LUBRICATION**

- ✓ **UPPER FIFTH WHEEL PLATE 300 LM** (LM = low maintenance)
– a cast iron plate with skid plates made from a special resistant material that reduces the use of grease

- ✓ **Green Eye**

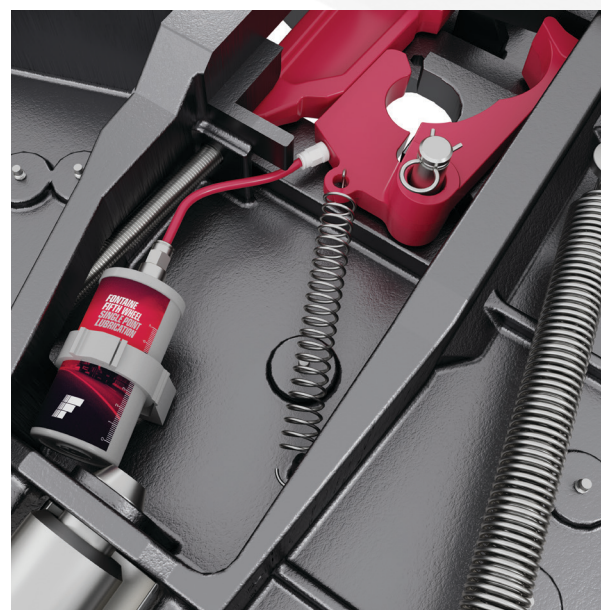
SAFETY LOCK PIN WITH SENSOR



If the fifth wheel is not closed or is damaged, the Techlock safety clamp will not fit.

- ✓ **SINGLE POINT LUBRICATION**

The Fontaine Fifth Wheel single-point lubrication system automatically applies grease to the trailer pin, and its operation can be programmed at intervals of 1 to 12 months, so you do not have to remember about lubrication.

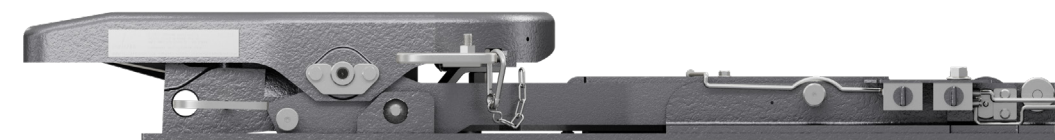


FONTAINE
FIFTH WHEEL

LIFTING FIFTH WHEEL FONTAINE 3000 FFH

The fifth wheel is designed for Mega tractors, which thanks to the lifting mechanism enables the attachment of standard height semi-trailers. In the lifted position, the fifth wheel has the same strength as in the lowered one – both types of semi-trailers can be loaded in the same way.

 **Alupart**
NOWOCZESNE KOMPONENTY ŚRODKÓW TRANSPORTU

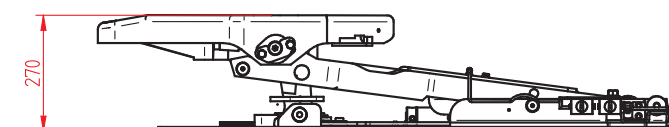
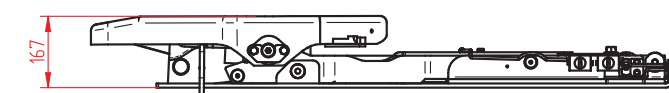
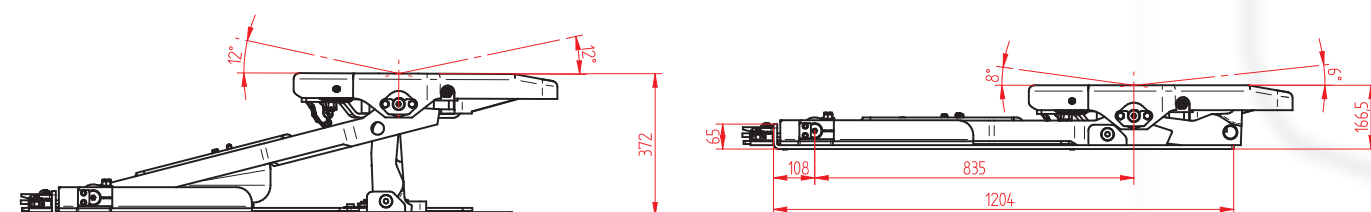
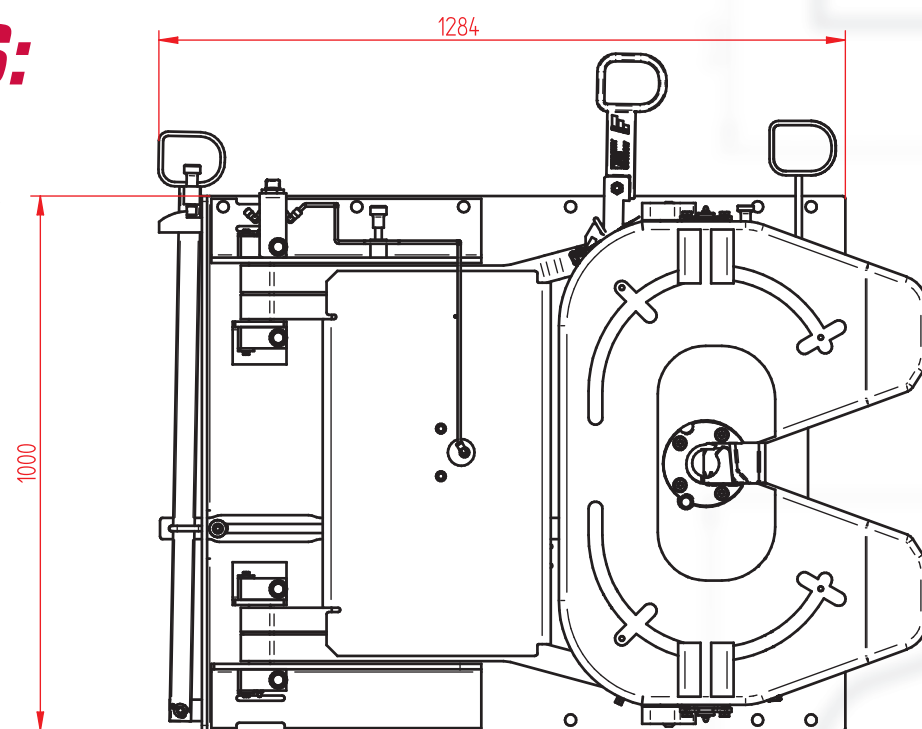


www.fontainefw.eu

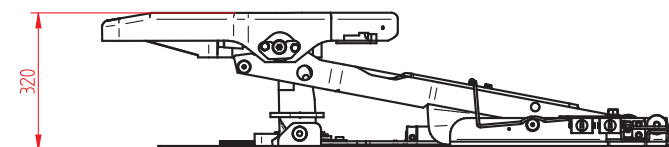
Alupart Sp. z o.o. ul. Polna 7c 62-070 Dąbrówka | commercial contact: 508 991 999, 514 153 444

DIMENSIONS:

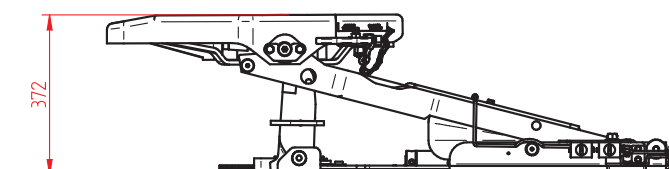
**FONTAINE TYPE
3000 FFH
CLASS G50-X**



1 lifting by 104mm (166 + 104 = 270mm)

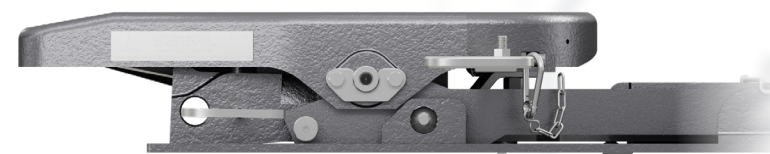


2 lifting by 154mm (166 + 154 = 320mm)



3 lifting by 206mm (166 + 206 = 372mm)

HEIGHT ADJUSTMENT AVAILABLE TYPES:



BENEFITS:

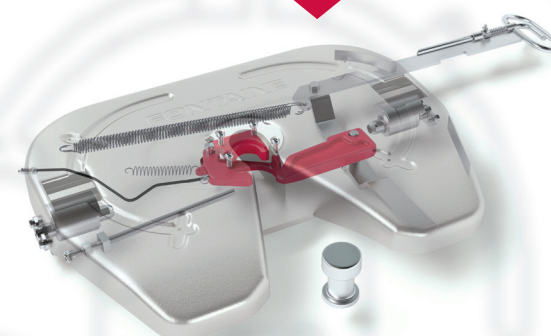
THE HIGHEST TECHNICAL PARAMETERS ON THE MARKET:

- ✓ D = 130 kN – the maximum drawbar pull for a set with a tractor with 2 axles + semi-trailer with 3 axles and 40 tonnes GVW is about 90 kN – meaning the fifth wheel features a significant reserve of strength.
- ✓ U = 18 tonnes – the maximum load on the fifth wheel for a standard semi-trailer with 3 axles and length of 13.6 m, loaded to the maximum GVW, creates a load on the fifth wheel amounting to 12 tonnes – the fifth wheel has a large reserve of strength.

✓ TechLock ®

No contact = no locking

Designed to reduce the risk of not locking, the patented TechLock® height sensor will not allow the fifth wheel to close if the trailer pin is at the wrong height or in the wrong position.



Brake shoe protection

Our profiled safety devices protect the **TechLock** mechanism against damage caused by improper coupling.

Decreased wear on the trailer pin

The 360° pin contact surface extends the service life of the trailer pin mechanism and of the fifth wheel.



SCAN THE CODE AND SEE THE DETAILS

**3 LATA FABRYCZNEJ
GWARANCJI FONTAINE**



**IN EUROPE, ONLY FONTAINE PROVIDES
A 3-YEAR WARRANTY ON ALL TYPES OF FIFTH WHEELS!**



www.fontainefw.eu

Alupart Sp. z o.o. ul. Polna 7c 62-070 Dąbrówka | commercial contact: 508 991 999, 514 153 444